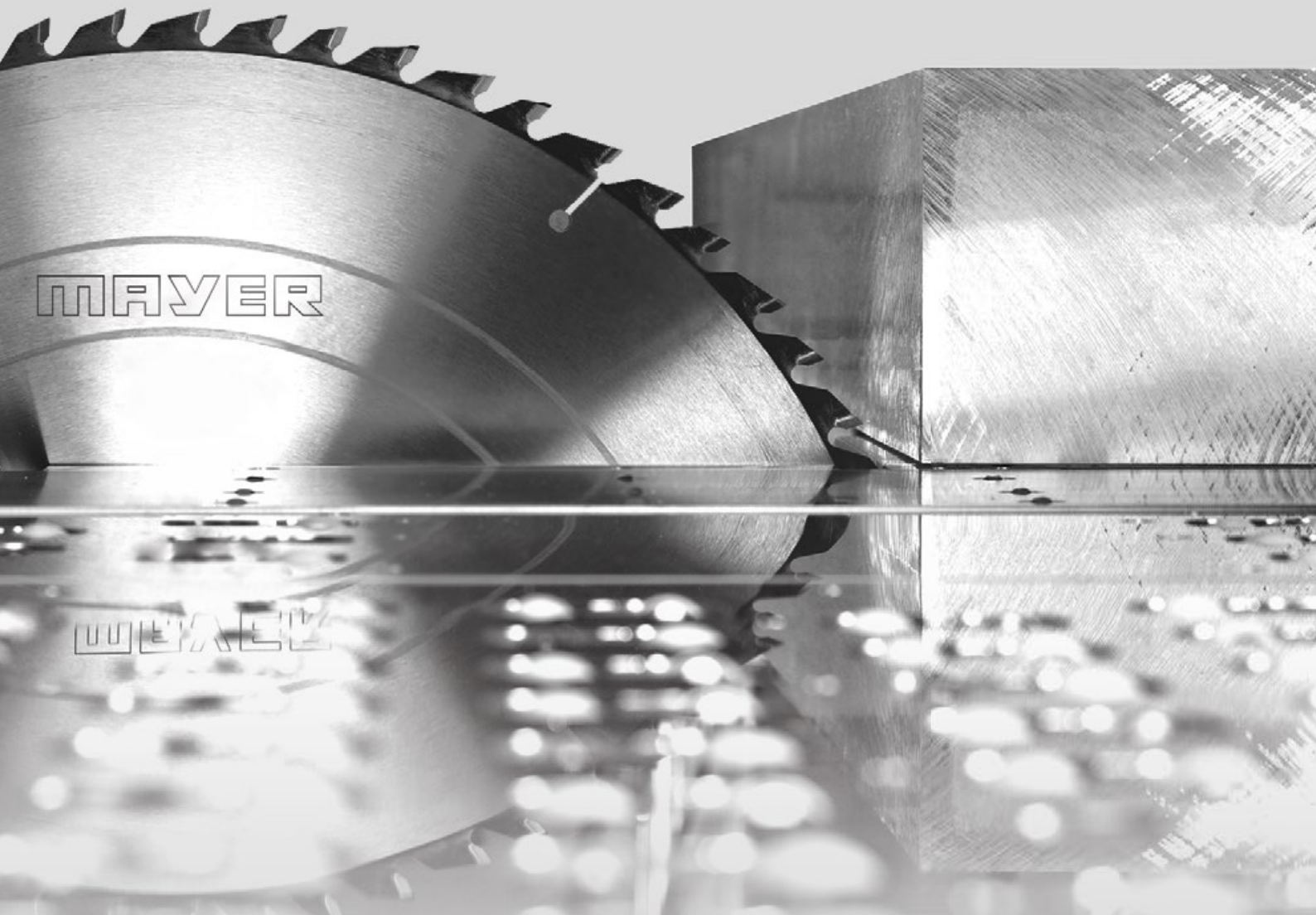


MAYER®



Aluminium

Beam saws

The Mayer beam saw –
as versatile as your challenges

Quality & Reliability

More than 70 years of experience

For over 70 years, MAYER has stood for the highest quality, precision and exceptional customer service. Our many years of experience in mechanical engineering guarantees quality, reliability and customer service.

It has always been our utmost concern to create a saw that is safe for both employees and the environment. Engines and energy sources will automatically turn off when they are not required and back on again when necessary. Extraction only happens where the chips accumulate. Thanks to the heavy, solid and low vibration design of our saws, the thin out sawing technology uses only minimum energy and conserves resources.



Hans Mayer



Kurt Mayer



Hansjörg Felder



Martin Felder



1950

Otto Mayer
founded the
company

1966

The first veneer cutting saws are built

1972

Soon followed by panel sizing saws

1982

Panel sizing saws
become our
main product

1996

We start with the construction of
vacuum feed systems

2000

We develop angular systems for the
chipboard industry

2006

We are building one of the largest cutting
systems for aluminum panels

2010

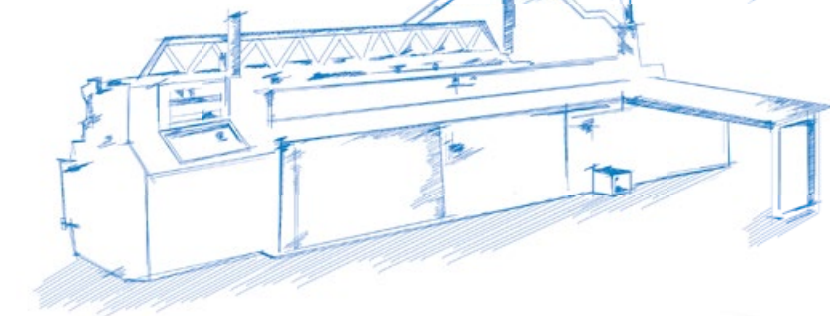
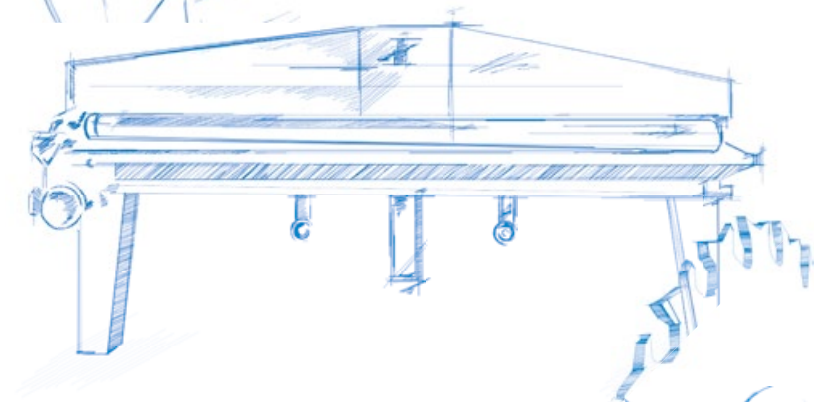
60 years
company anniversary

2011

Our product range is extended by a high-performance
MDF panel cutting machine

2019

Two strong companies,
one common success
story



MAYER





around the world

Mayer: worldwide quality and reliability

As part of the Felder Group, we are globally available to you. Our production plants in Hall in Tirol and Lombach produce quality machines day after day. More than 100,000 square meters of production space are used for processing a wide range of materials for use in trade, business and industry. Together we work on the development, marketing, and worldwide distribution of our high quality products.

Hundreds of specialist consultants in the approx. 270 sales and service centers in 84 countries configure customized product solutions tailored to customer needs after a targeted requirement analysis.

Subsequently, specially trained technicians carry out the delivery, installation, commissioning and the initial machine configurations. This ensures that your machine can be used productively from the very first day of use.

Through our worldwide customer service network, we ensure the short term availability of our service technicians as well as a smooth supply of spare parts. In addition, our customers benefit from individual inspection and maintenance packages and a competent service hotline for immediate assistance.

What's the content?

advanced line 250	6-7
advanced line 200	8-9
advanced line 160	10-11
advanced line 160 turn	12-13
advanced line 130	14-15
advanced line 100	16-17
A machine for every challenge	18-19
Software PC7000	20-23
More efficient	24-27
More extras	28-29
The world of Mayer saws	30-31

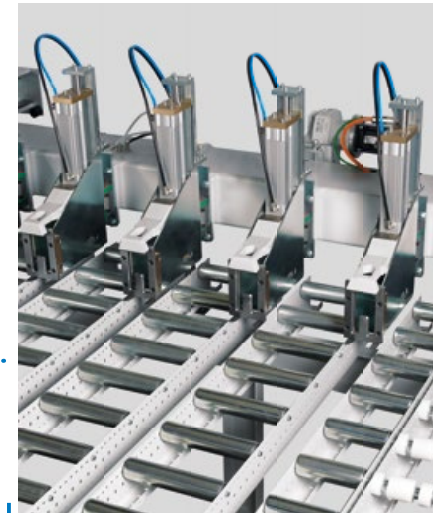
advanced line 250

The strong

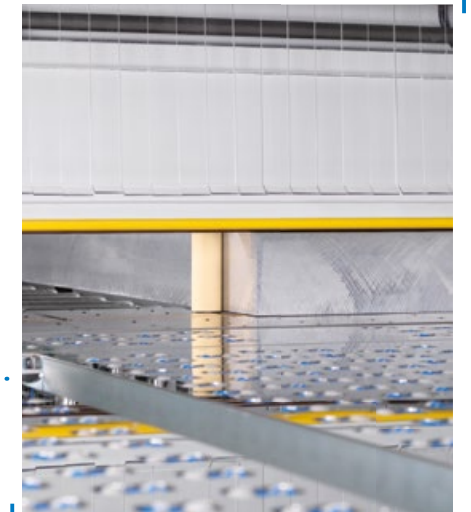
The strongest in its class

Outstanding precision and cutting quality with maximum performance convince in every challenge. With saw motors of 55 or 75 kW power, the advanced line 250 achieves exceptional feed rates and cutting performance in every application. It is a top-of-the-range machine with numerous proven Mayer details for the ultimate panel cutting of aluminum, non-ferrous metals, and plastics.

Cutting length: $125^{63/64}$ - $165^{23/64}$ " (3200–4200 mm) (& custom cutting lengths)
Saw blade diameter: $33^{55/64}$ " (860 mm)
Saw blade projection: 275 mm
Feed speed: 0.2–60 m/min
Motor power: 55–75 kW/50 Hz



Ball bearing steel roller tracks designed for heaviest materials.



Pneumatic pressure unit behind the pressure beam.



Variable saw blade height adjustment on ground trapezoid guides with backlash-free ball screw.

advanced line 200

The massive

For exceptional challenges

The heavy machine body and the 43 kW saw motor guarantee a high cutting performance with excellent cutting quality even under the heaviest load. Equipped with all features an exceptional beam saw requires, the advanced line 200 is as strong as a bear in cutting aluminum, non-ferrous metals, and plastics.

Cutting length: $125\frac{63}{64}$ - $165\frac{23}{64}$ " (3200-4200 mm) (& custom cutting lengths)
 Saw blade diameter: $26\frac{3}{8}$ " (670 mm)
 Saw blade projection: $8\frac{15}{32}$ " (215 mm)
 Feed speed: 0.2-60 m/min
 Motor power: 43 kW/50 Hz



Pneumatically controlled vertical fastening unit for strip cuts.



Split pressure beam for perfect extraction results when cutting.



Interchangeable cutting lips made of non-ferrous metal.

advanced line 160

The all rounder

Awarded Several Times

The advanced line 160 is an innovative high-end machine and a true all rounder among beam saws for aluminum and non-ferrous metals. The solid and low vibration construction of the machine frame and the high precision linear guides guarantee optimum cutting results.

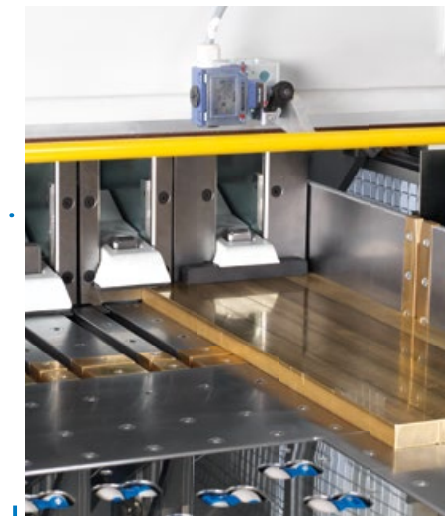
Cutting length: $125\frac{63}{64}$ - $165\frac{23}{64}$ " (3200–4200 mm) (& custom cutting lengths)

Saw blade diameter: $23\frac{5}{8}$ " (600 mm)

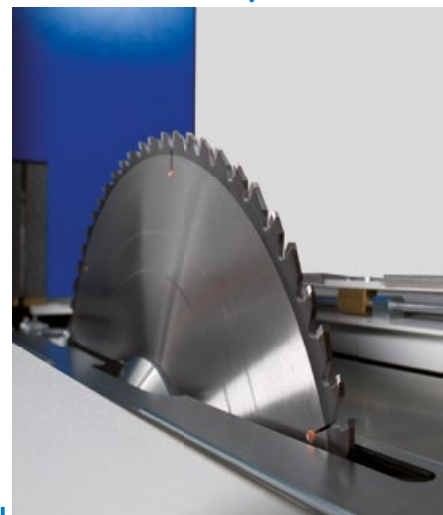
Saw blade projection: $7\frac{3}{32}$ " (180 mm)

Feed speed: 0.2–60 m/min

Motor power: 35 kW/50 Hz



Strip clamping jaws for strip cuts up to 20 mm width.



Closed saw carriage cover for excellent extraction results.



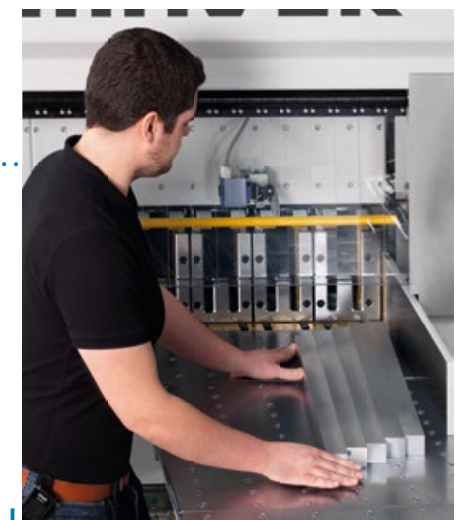
Angular table with air cushions and rollers on all sides for energy-saving material handling.

advanced line 160 turn

The comfortable

User-friendly material handling

The advanced line 160 turn offers comfortable operation for easy material handling without additional lifting equipment. The powerful table construction moves heavy, large sized boards and cuts strip packages easily into the desired starting position for the next cut. With the preprogrammed table positions, the operator can take an ergonomic operating position even when processing small parts and work comfortably against the angle stop.



Convenient machining of small parts on the turntable.



Convenient machining of small parts on the turntable.



**maximize
your working
comfort**

advanced line 130

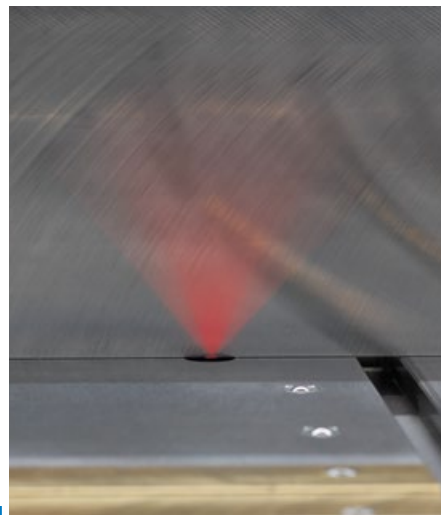
The experienced

Tailored exactly to customer needs

Each market and customer has their own special demands when it comes to panel cutting. According to these requirements, the advanced line 130 combines the extraordinary with the useful. Thanks to the solid construction and the powerful saw carriage, cutting forces are removed vibration free. With the efficient saw motor, the advanced line 130 cuts any aluminum, non-ferrous metals, and plastic up to 130 mm accurately and with high quality results.

Cutting length: $125\frac{63}{64}$ - $165\frac{23}{64}$ " (3200-4200 mm)
 Saw blade diameter: $19\frac{11}{16}$ " (500 mm)
 Saw blade projection: 142 mm
 Feed speed: 0.2-60 m/min
 Motor power: 24 kW/50 Hz

“Out of the daily requirements of our customers, we develop with passion efficiency for every cut.” Hans Mayer



Automatic length measurement system for trimming cuts.



Ergonomically arranged controls on the side table.

advanced line 100

The classic

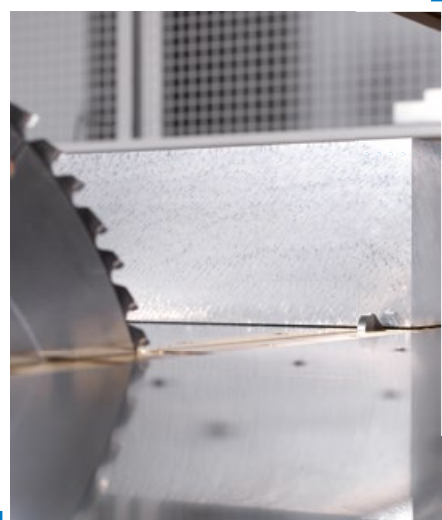
The result of decades of experience

The advanced line 100 impresses with a very solid construction, high precision and cutting accuracy. Excellent, dimensionally accurate cuts of aluminum, non-ferrous metals and plastics up to 100 mm are ensured by the 18 or 24 kW saw motor. The solid construction of the machine body, the excellent guidance of the saw carriage, and the vibration free, high precision saw bearing are additional success factors for perfect cutting.

Cutting length: $86\frac{39}{64}$ - $125\frac{63}{64}$ - $165\frac{23}{64}$ " (2200–3200–4200 mm)
 Saw blade diameter: $17\frac{23}{32}$ " (450 mm)
 Saw blade projection: $4\frac{59}{64}$ " (125 mm)
 Feed speed: 0.2–60 m/min
 Motor power: 18–24 kW/50 Hz



Mobile support tables with lock.



Mechanical rapid emergency stop.



Minimal quantity lubrication system with an ergonomically arranged control unit.

a machine for every challenge

Perfection is in the detail

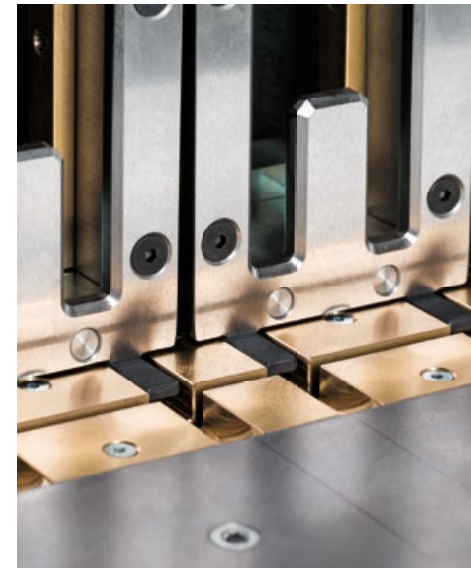
Each machine type stands for absolute excellence. The more diverse the requirement of the materials to be cut, the more paramount the small details become in determining the success of the entire process.

For our machine concepts, we have therefore developed numerous detailed solutions that capture every challenge exactly in a nutshell. Whether cutting hard or soft board materials, honeycomb and lightweight construction materials, rolled or cast aluminum panels - we find exactly the right solution for our customers. Even for shaped tubes or round bars, we guarantee to have the right product.

You can count on our state of the art technology, competence, innovative spirit and benefit from our many years of experience.



Feeding table with pneumatic pressure roller for exact angular cuts even of long components.



Interchangeable cutting lips made of non-ferrous metal.



Minimum quantity lubrication system (MMS) integrated in the saw carriage for the main saw blade.



Multiple grippers for flexibility on different component widths.



The integrated strip catcher inside the extraction channel prevents scraps from entering the extraction system.



Ergonomic air cushion table with a long angle stop for easy operation and high angular accuracy at the cutting line.

perfection
and high
quality in
every detail

software solutions

PC7000

For technically demanding projects but also in daily operation, intuitive and intelligent software solutions guarantee the efficiency and productivity of the entire production process.

The PC7000 is the software for panel cutting. With the user-friendly control, both, single cuts and complex cutting plans, can be processed quickly and easily. Animated pictures and specific operating instructions during the work process ensure easy and safe operation of the machine at all times. With the individually configurable parameter list, the machine can be adapted exactly to the specific machining strategies.

The ergonomic control panel displays all controls in a clear and organized manner. All symbols in the software are color-coded for optional operation in touchscreen mode. The 24-inch widescreen monitor clearly displays all information, cutting plans and control messages. Machine data, maintenance instructions and error diagnosis elements can be called up in the status menu and the online connection ensures maximum machine availability. The controller is also prepared for connecting a label printer.





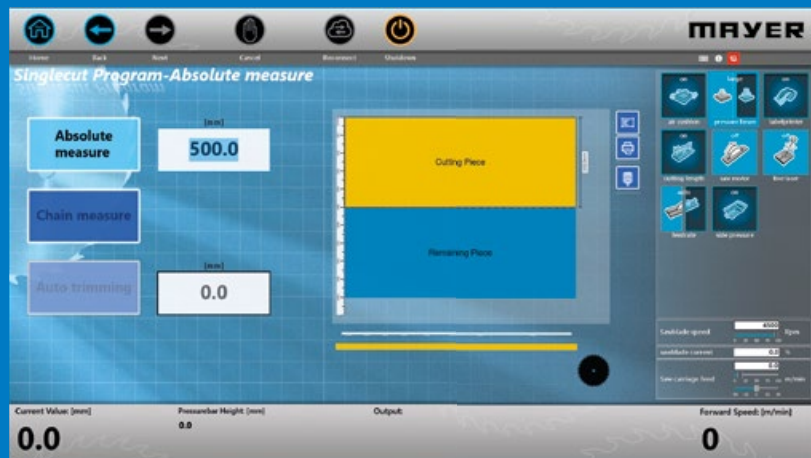
Manual programs

The manually controlled program sequences provide the operator with a quick introduction to machine operation. By dividing the software into a single, strip, layered or a dimension cut program, the operator can set up and execute a processing sequence with only a few input steps.



Strip cutting program

Entering of parameters is clearly and visually supported. Remaining quantities are calculated immediately and offset in colour. For periodic adaptations the created cutting plans can be saved.



Single cut program

Clearly arranged, the operator selects the desired manual cutting option and receives the graphic feedback about the calculated machining result immediately after the dimension entry. No matter if absolute dimensions or chain dimensions - after a few clicks the machine is prepared for cutting.

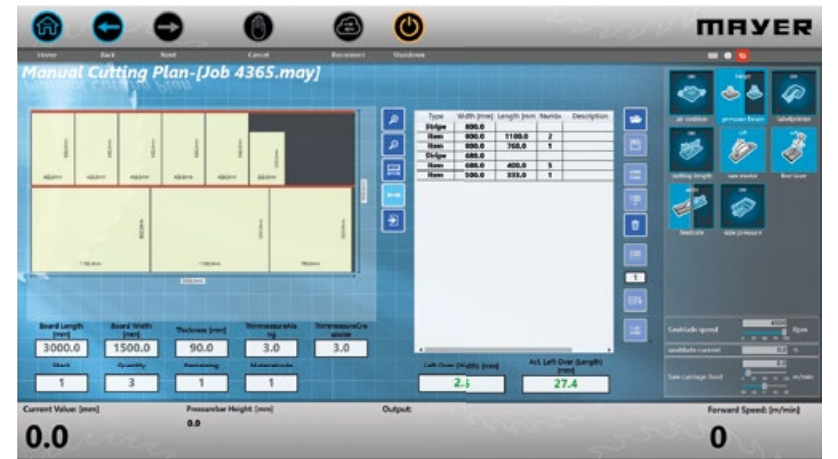


Individual parameters

Every company has its own processing strategy. A parameter list is available to the operator for individual production processes in which the processing strategy can be changed quickly and easily depending on the material.

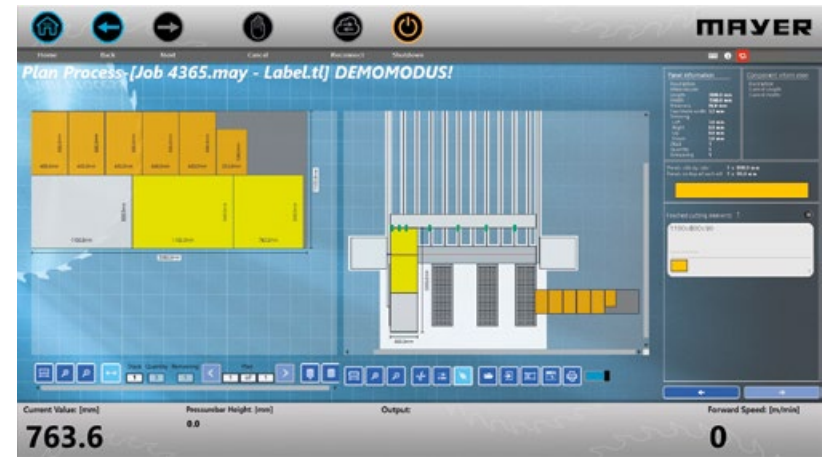
Prompt cutting plans

Simple cutting plans do not need cut optimization. With the help of the software, the operator can act quickly and configures his cutting plan directly on the machine. All necessary information about the cutting result is immediately displayed. For recurring processing, the operator saves the cutting plan directly in the machine database.



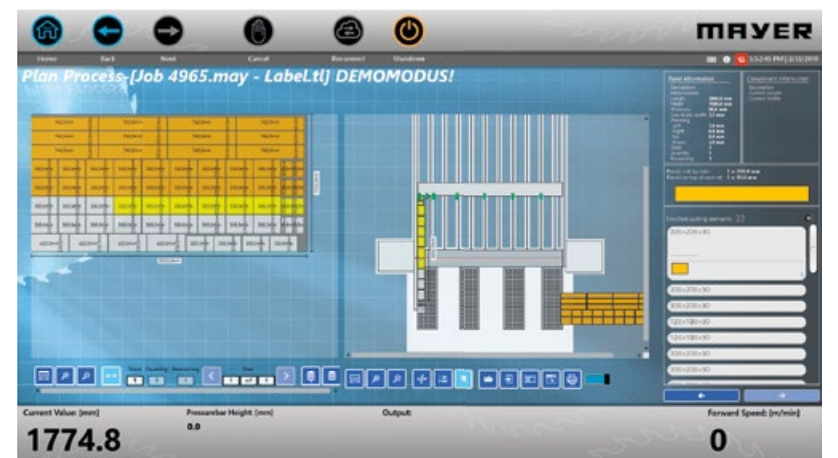
Carry out cutting plans

Saved cutting plans are accessed and executed in the command center. Continuous graphics guide the operator through the cutting plans. All feedback from the controller and information about the processed components are clearly displayed on the 24" widescreen monitor. The cutting plans to be processed can be checked in advance through adaptive simulations. This allows the source of errors to be eliminated almost entirely.



Complex projects

Each project has its unique challenges. The command center's interactive feedback helps keep track of complex cutting plans. The label information is immediately linked to the component and identifies it for further process steps.



Service & Diagnosis

Visual feedback about machine data, simple machine maintenance and optical troubleshooting with the possibility of a secure online connection ensure maximum machine availability. Efficiency and performance guarantee maximum productivity.

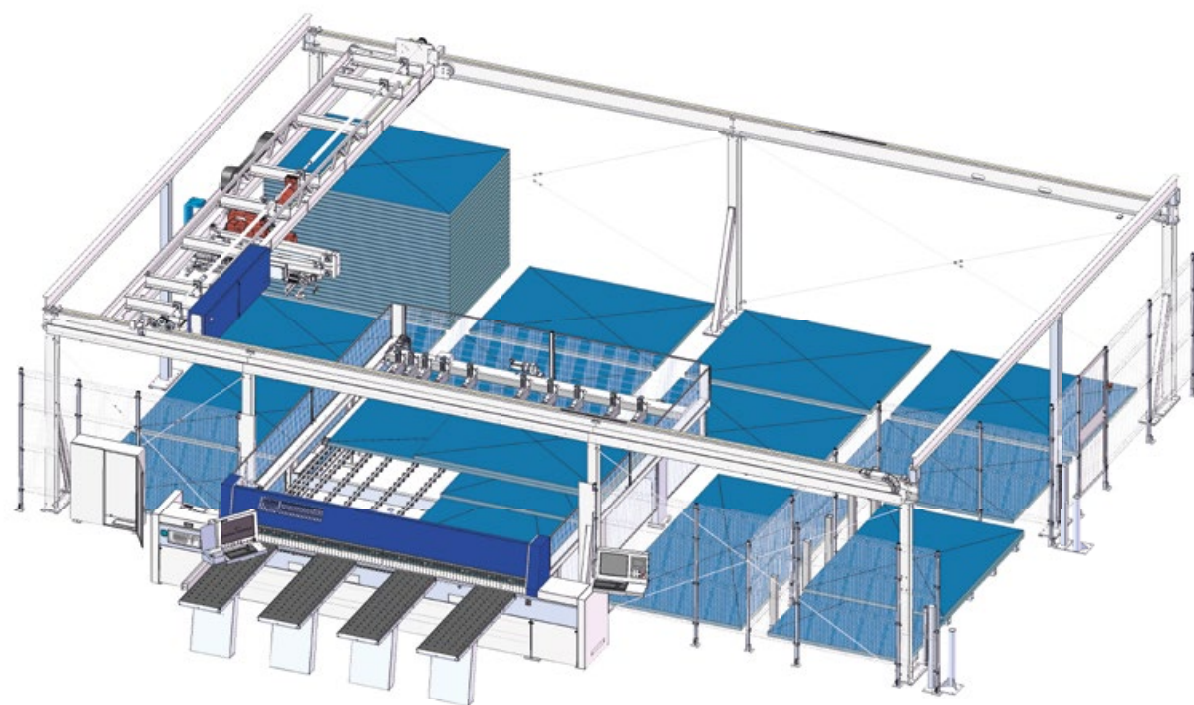


more efficient

Vacuum feed with line gate

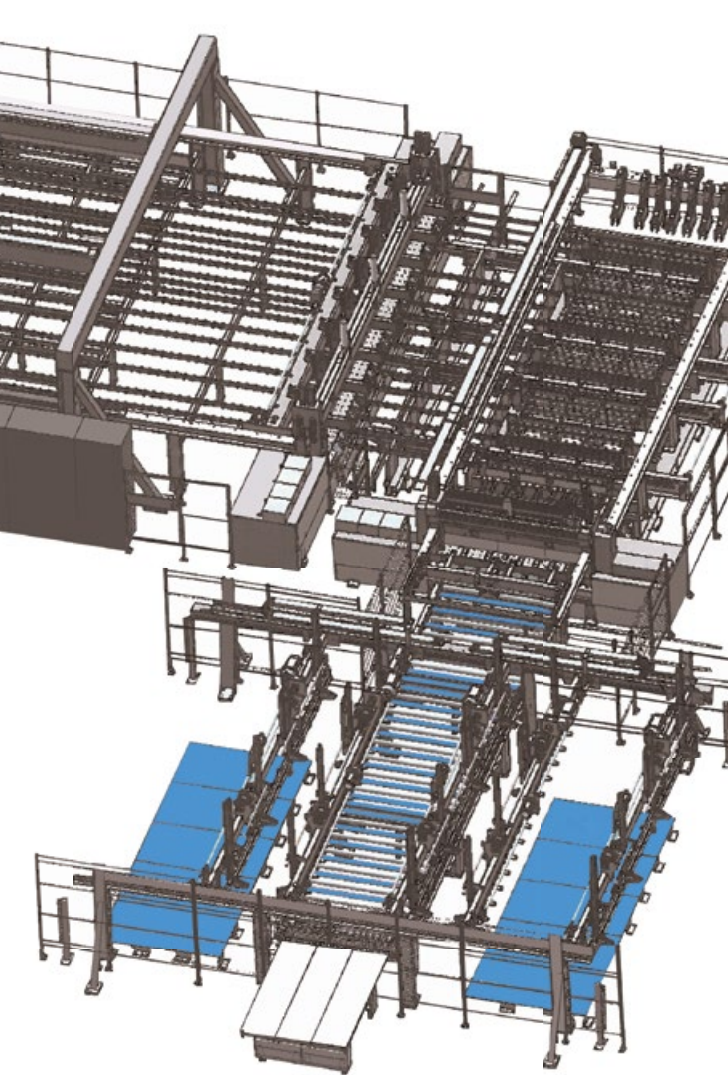
The great advantage of this system is the ability to feed different types of panels without human assistance. While on a lifting table only one type of panel can be processed the line gate processes several raw panel stacks simultaneously. Depending on the requirements for the processing of different panels, we design your system with several storage areas.

- For cutting or nesting machines – or for both at once.
- Scalable feeding solution with line gate and a flexible number of storage locations for the forklift – depending on the space available and the capacity requirements of your cutting unit.
- Maximize the capacity of your cutting machine by integrating a pre-stacking table.
- Optional slewing gear in the loading unit.
- Variable panel dimensions.



Angular systems

No other type of machine can produce such a high volume of finish cut output as the angular system. For this purpose, two fully automatic beam saws are merged into one unit. The raw boards are placed on one side and come out as finished blanks on the other side. Turning processes and workpiece transfer operations are done automatically and mechanically without human assistance. Control is carried out by our proven software system, which works uncompromisingly with your ERP software. Decades of experience enable you to achieve maximum cost-effectiveness with the cutting unit and mandate the increase of your business's profits.



Cutting length of the longitudinal saw: $125\frac{63}{64} - 354\frac{21}{64}$ " (3200–9000 mm)

Cuting length of the crosscut saw: $47\frac{1}{4} - 125\frac{63}{64}$ " (1200–3200 mm)

Motor power: 18–75 kW

Saw blade diameter: $17\frac{23}{32} - 33\frac{55}{64}$ " (450–860 mm)

Cutting height: $4\frac{23}{32} - 10\frac{15}{64}$ " (120–260 mm)

Mayer angular systems stand for:

- Precise, reliable process control results in maximum cutting capacity.
- Maximum availability through high-quality German engineering.
- Finished cut quality and maximum availability thanks to the latest sawing technology in heavy industrial design.
- Concepts for every performance range with package heights up to $10\frac{15}{64}$ " (260 mm) and sawing capacities up to 75 kW.
- Latest control technology with standard components and open systems.
- Adapted handling equipment for all panel products.
- Each system is tailored to our customers and their requirements.

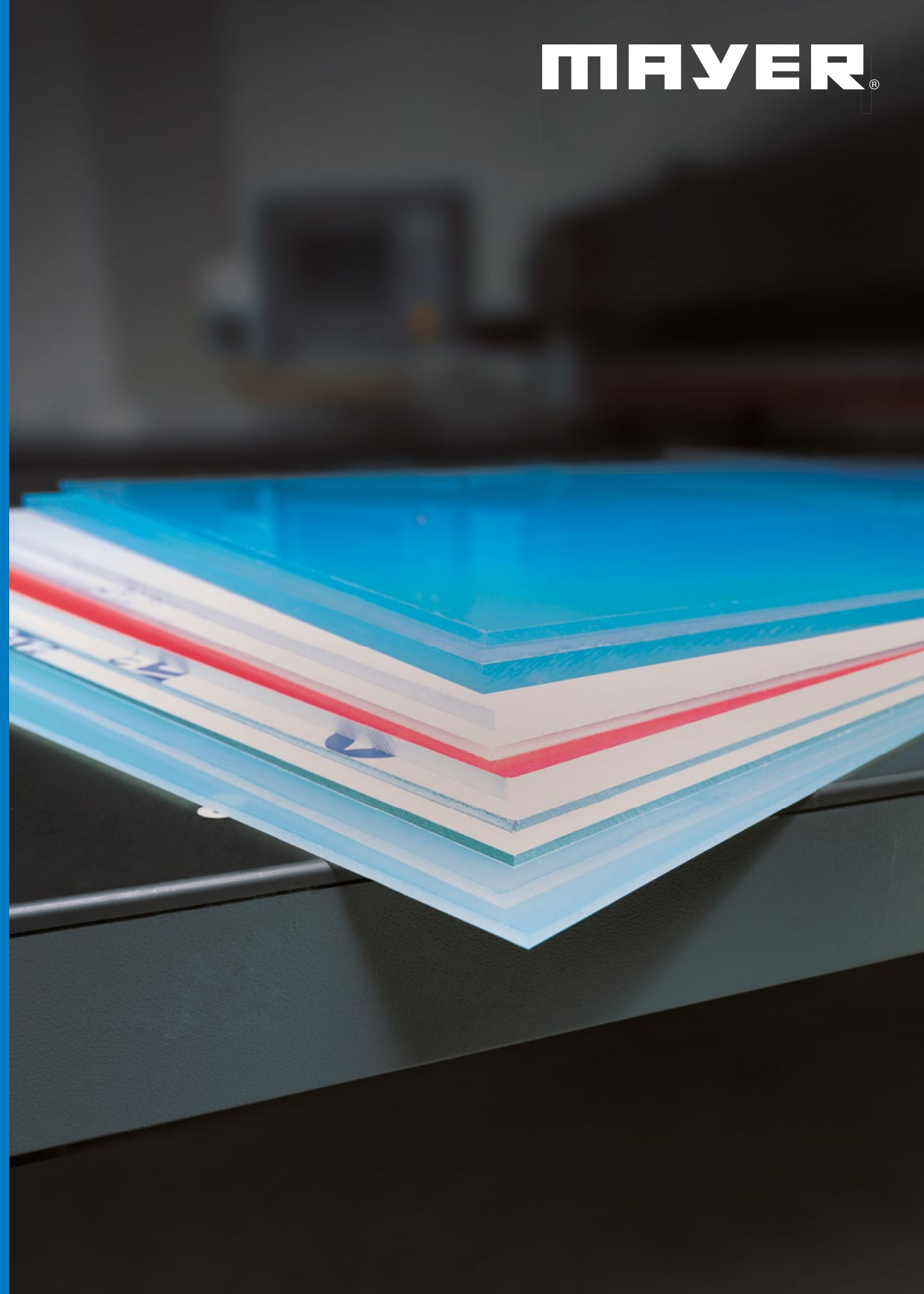
more efficient

Each material has its own solution

The range of board materials available on the market today is enormous. In addition to machining aluminum and wood, we also achieve excellent results cutting plastics with specially configured machines.

Every year, new plastic compounds are produced, resulting in new semi-finished products, various non-ferrous metal alloys and new composite materials. This is an incentive for us to adapt our solutions to your requirements. Benefit from our decades of experience and our process-oriented solution approaches. With state-of-the-art technologies and customized software solutions, every single machine becomes part of your overall concept.

Tell us about your requirements. Together, we will examine your cutting processes and with you develop an exact solution that brings your company the necessary efficiency and cost savings.





more extras

MAYER®

Additional services to meet individual needs

Our biggest concern is the individual optimization of your production process. No matter the challenge, we create customized production solutions – flexible, innovative and “Made in Germany.”

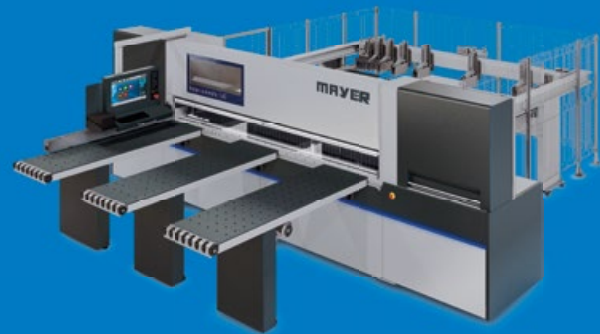
- Optimization programs
- Electronic storage system
- Area storage
- High bay racking
- Stacking system
- Extraction systems

Production program

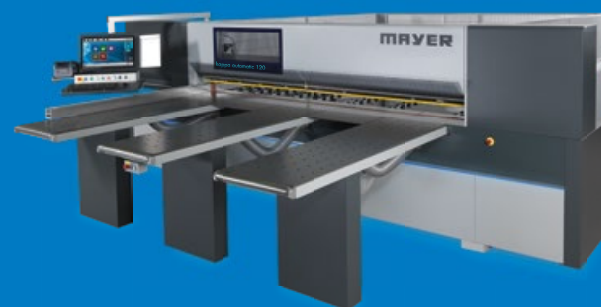
- Beam saws for wood, plastic, non-ferrous metals, composites, gypsum and cement fibreboard
- Feed systems for beam saws (lifting table, vacuum feed)
- Fully automatic angular systems
- Custom solutions for panel sizing

special solutions for special challenges

the world of mayer saws



kappa automatic 140
wood & plastic



kappa automatic 120
wood & plastic



kappa automatic 100
wood & plastic



kappa automatic 80
wood

Our machines – your success

We want to give you the perfect tool for your success story. For more than 70 years, we have been working towards this goal, creating with passion, tradition and innovation unique beam saws that can handle every material and every challenge.



advanced line 250
aluminum & plastic



advanced line 200
aluminum & plastic



advanced line 160
aluminum & plastic



advanced line 130
aluminum & plastic



advanced line 100
aluminum & plastic

a world full of choices and possibilities

MAYER®

MEMBER OF FELDER GROUP

FELDER GROUP

KR-Felder-Straße 1
A-6060 HALL in Tirol

☎ Tel. 05223 55306

www.mayer.us

[Contact](#)

*Follow us on Facebook,
Instagram, LinkedIn and Youtube.*